



Element-174 Official Walkthrough (v0.16)

This is a walkthrough for the adult visual novel, Element-174 by Knotty Games. We will try to make it as spoiler-free as possible, but given that it is a gameplay guide that can sometimes be unavoidable. Also please note that this walkthrough is for a game that is in development and is subject to change.

Please visit patreon.com/knottygames to support this game!


At the end of this guide, flowcharts are provided with all the major choices in the game and which character(s) gain points from that decision. As the story progresses, certain point thresholds must be met in order to continue down that character's route. The flowchart indicates the highest number of points that can be obtained for each character at that point in the story (e.g. *Isabella* 3 at the end of Day 2). It is also possible to earn maximum points with multiple characters (at least early on in the story). Characters marked as 1/2 or 1/3 indicate a late first meeting with that character. For example, *Rachel* 1/2 at the end of Day 2 means her first point or second point (if you already met her).


TABLE OF CONTENTS

1. [Ash](#)
2. [Caroline](#)
3. [Chloe](#)
4. [Emma](#)
5. [Holmes](#)
6. [Isabella](#)
7. [Jenna](#)
8. [Jules](#)
9. [Katy](#)
10. [Madison](#)
11. [Malia](#)
12. [Penny](#)
13. [Rachel](#)
14. [Sarah](#)
15. [Trish](#)
16. [Zoey](#)
17. [Daily Flowcharts](#)

Flowchart Icons


Starting on Episode 2 (Day 8), there are also additional icons for the flowchart that describe what the scene's importance is. Here are their descriptions:

 Green Flag – These scenes are needed to advance along a character's route. If they are not seen by the end of the week (route check), then that character's route ends. However, green flags usually indicate the first time the scene is offered, but can be chosen later (first warning).

 Red Flag – These scenes are needed to advance along a character's route. However, when the choice has a red flag, it means it is the last time the choice will be offered. If the scene isn't done by then, the route ends during route checks (last warning).

 Pink Flag – A scene with significant sexual content.

 Light Blue Flag – A scene with a secondary choice that may affect game endings/routes.

 Blue Flag with Numbers – These are usually numbered 1-3 and determine the priority that an option has when compared with other choices at the time. The game will present choices for the two highest point women. Then it selects the lowest number flags in the case of a tie. Using the first choice at the start of episode 2, here are some examples of which options would be chosen (given that they met all yellow requirements)

Madison (4), Trish (3), Emma (3) = Madison (highest) and Trish (her 2 beats Emma's 3)

Madison (4), Emma (4), Sarah (5) = Sarah (highest) and Madison (her 1 beats Emma's 3)

Trish (3), Emma (4), Sarah (3) = Emma (highest) and Trish (her 2 beats Emma's no flag)

To achieve maximum points for a particular character while keeping open any character sub-routes/endings, please follow the guide below:

Give Zoey pen
Check out club
Go to art class ¹
Tell him ³

White = Choices that lead to scenes with points

Red = Choices that give a point towards that character (very important)

Green = Choices that earn points w/ other parallel characters. See superscript notes for details.

An asterisk denotes only 1 viable route choice there (if that route is open)

Blue = Choices that affect this character's sub-routes or endings. See superscript notes



ASH

Day 1	Day 2	Day 3	Day 4	Day 5
Give Zoey pen	Go to art class ¹	Sure/Sorry ²	Defend/Bully ⁵	[See note ⁸]
Ignore Caleb	Decline Zoey	Tell him ³	Check out/Don't ⁶	Leave them ⁹
Check out club	Take the blame	Pizza/Explore ⁴	Chaos ⁷	Ero-games club
				Lie ¹⁰

¹ Point for **Jules**. Rachel's route can't be completed on Ash's route

² Point for **Penny** or **Zoey**. Both routes are activate at end of Week 1 regardless

³ Point for **Jenna**. They can both receive max points in Week 1 and share a sub-route later

⁴ Point for **Emma** or **Jules**

⁵ Point for **Jenna** or **Jules**

⁶ Point for Trish or **Penny**. Trish isn't an option on this, but her scene leads to Emma's

⁷ If going for **Emma**, choose "Chaos." Chloe's route can't be completed on Ash's route

⁸ Depending on if you bullied or not, there is a chance for a point with **Penny**, **Malia** or **Caroline**

⁹ It's too late for Madison's route here so choose a point for **Emma**

¹⁰ In order to keep Ash's Jenna sub-route open, you need to lie for Jules here

Day 6	Day 7	Day 8	Day 9	Day 10
Help/Answer ¹	Visit Jules ²	Trail Emma ⁵	Jenna meet Zoey ⁸	[no scene]
Go to the movies	Cross street ³	Coffee with Jenna ⁶	Tuesday club ⁹	Wednesday club ¹¹
See Jenna in alley	Emma/Penny ⁴	Fastfood w/ Malia ⁷	Visit Jules ¹⁰	[3 possible] ¹²

¹ Point for **Penny** or **Malia**. If you wish to keep Malia's route open, it helps to take her's here

² In order to keep the Jenna sub-route open, you need to visit **Jules**. If you're not interested in that, a point for **Malia** or **Caroline** is available here, keeping open one of their routes but ending Jenna's route

³ Crossing the street here keeps the **Jenna** sub-route open. Otherwise a point for **Caroline** is available

⁴ Point for **Emma** or **Penny** here if either of them have 3+

⁵ Point for **Emma** here if you're still on her route. Only option for Ash's route at this point

⁶ **Jenna** sub-route requirement. Otherwise, a point for **Caroline** or **Penny** here

⁷ Point for **Malia** here if you're still on her route. Only viable option for Ash's route at this point

⁸ **Jenna** sub-route requirement. No other choices should be available at this point

⁹ Point for **Ash**, although not needed for best ending. Otherwise a point for **Emma** or **Caroline** here

¹⁰ Point for **Jules** here if you're still on her route. Only viable option for Ash's route at this point

¹¹ Necessary scene for **Ash** that can be pushed back later, otherwise a point for **Jenna** if she's available

¹² Point for **Malia**, **Penny** or **Caroline**, if any of their routes are open



CAROLINE

Day 1	Day 2	Day 3	Day 4	Day 5
Give Zoey pen	Text back/Ignore ¹	Sure/Sorry ⁴	Bully Madison	Goto AD's office
Punch Caleb	Study science ²	He started it ⁵	Don't visit lab ⁷	Eavesdrop/Leave ⁸
Apologize	Research ³	Pizza/Explore ⁶	Assistant Dean	Lie/Give info ⁹

¹ Point for **Emma** or **Malia**. Starts either of their routes

² Point for **Trish**. This begins Caroline's Trish sub-route, otherwise a point for **Madison**

³ Point for **Trish**. Helps with the Trish sub-route. Otherwise it's a point for **SluttyDemon**

⁴ Point for **Penny** or **Zoey**. Both routes are activate at end of Week 1 regardless

⁵ Point for **Trish**. Helps with the Trish sub-route. Otherwise it's a point for **Holmes**

⁶ Point for **Emma** or **Jules**

⁷ Point for **Penny** that leads to a Caroline scene. If you're not trying for full Caroline points, visiting the lab gives a point for **Trish** and Emma (Chloe is non-viable in Caroline route)

⁸ Point for **Emma** or **Madison**. Only choose Eavesdrop if you've already met Madison

⁹ Point for **Jules** or **Holmes**

Day 6	Day 7	Day 8	Day 9	Day 10
Help/Answer ¹	No Jules or Malia ⁴	[3 possible] ⁷	Ask Holmes ¹⁰	Rachel/Holmes
Restaurant ²	Walk with Caroline	Visit Caroline ⁸	Confront her	Look for Trish
Say hello ³	Kiss/Don't kiss ⁵	Fastfood w/ Malia ⁹	Jules/Side street ¹¹	Visit her apartment
	Emma/Penny ⁶			Sleep w/ her/Don't

¹ Point for **Penny** or **Malia**. Malia's route may still be open if you gave up one of Caroline's points earlier

² Point for **Madison** if not on Trish route. Sarah route is never viable while on Caroline route

³ Point for **Trish** or **Holmes**. This ensures that Caroline's Trish sub-route remains active next week. Or that Holmes main route is available if you've earned 3+ points with her

⁴ A **Caroline** point can be given up in order to keep Malia or Jules routes active next week

⁵ The choice here has an impact towards which ending Caroline's route leads to. Make another save here

⁶ Point for **Emma** or **Penny** here if either of them have 3+

⁷ Points are available for **Emma** and **Madison** if their routes are still open. **Trish** also has a non-necessary scene here if you're looking to continue down her sub-route

⁸ The **Caroline** point here can be given to **Penny** instead (the only other route possible here)

⁹ Point for **Malia** here if you're still on her route. Only viable option for Caroline's route at this point

¹⁰ Point for **Holmes** here if you're still on her route. Only viable option for Caroline's route at this point

¹¹ Point for **Jules** or **Madison** if you're still on either of their routes



CHLOE

Day 1	Day 2	Day 3	Day 4	Day 5
Give Zoey pen ¹	Art Class ²	Sure/Sorry ³	Defend ⁶	Watch video
Ignore Caleb	Decline Zoey	Don't tell him ⁴	Visit lab	Leave them ⁷
Check out club	Act offended	Pizza/Explore ⁵	Order	Goto club/Else ⁸
				Lie ⁹

¹ Not giving the pen here opens up an alternate Chloe route. If you choose to ignore Zoey here, you open up the possibility to keep Madison or Trish's route opens at the cost of one less Chloe scene

² Point for **Jules**. Rachel's route never meets the requirements on Chloe's route

³ Point for **Penny** or **Zoey**. Both routes are activate at end of Week 1 regardless

⁴ Point for **Sarah**. A later Chloe requirement makes Jenna's route non-viable with Chloe's

⁵ Point for **Emma** or **Jules**

⁶ Defend whichever character during this scene. Jenna is non-viable, however

⁷ Unless you gave up Chloe's Day 2 point for **Madison**, choose Leave Them for **Emma's** point

⁸ Point for **Ash** or **Sarah**

⁹ Point for **Jules**. Alternatively, you can Give Information here as long as you Answer Malia on Day 6

Day 6	Day 7	Day 8	Day 9	Day 10
Answer ¹	Meet with Malia ³	[4 possible] ⁵	[No scene] ⁷	Madison/Sarah ⁹
Stay with Sarah ²	Go to library ⁴	Talk with Penny ⁶	Emma/Trish ⁸	Trish/Ash ¹⁰
See Jenna in alley	Keep listening ⁴	Watch Camgirls	Visit Chloe	Penny ⁶

¹ Point for Malia. Alternatively, you can Help **Penny** as long you didn't Lie for Jules on the previous night

² Point for **Sarah**. **Madison's** route is only viable by sacrificing an earlier Chloe point

³ Point for Malia but leads into a necessary scene to stay on Chloe's route

⁴ A required scene to keep **Chloe's** route active in Week 2

⁵ **Sarah** is the easiest scene to get here. **Madison**, **Emma** and **Trish** are all possible by not giving Zoey the pen and punching Caleb. You lose a Chloe point by choosing History instead of Science on Day 2 though

⁶ Point for **Penny**. She should be the only viable choice for Chloe's route here

⁷ No other girl's routes should be active for this part

⁸ **Trish's** route may be open if you didn't give Zoey the pen and/or punched Caleb. **Emma's** route may be open if you punched Caleb. Both of these earlier choices potentially take a point away from Chloe's max

⁹ Point for **Madison** or **Sarah**, if their routes are still open

¹⁰ Point for **Trish** or **Ash**, if their routes are still open



EMMA

Day 1	Day 2	Day 3	Day 4	Day 5
Give pen/Ignore ¹	Text back	Sure/Sorry ⁵	Bully/Defend ⁷	[4 possible] ⁹
Punch Caleb	Decline/Science ³	He started/I did ⁶	Visit lab	Leave them ¹⁰
[2 possible] ²	[4 possible] ⁴	Order Pizza	Chaos ⁸	Lie/Give info

¹ You can give **Zoey** the pen or ignore her as long as you decline spending time with her on Day 2

² Point for **Caroline** or **Holmes**

³ If you met Zoey, choose Decline and an **Isabella** point. If you haven't met her, choose Science for **Trish**

⁴ Choose Sharks for **Isabella** point, Research for **Trish** or Camgirls for **SluttyDemon**. Sarah is non-viable

⁵ Choose Sure for **Penny**, Sorry for **Zoey**. Both routes are activate at end of Week 1 regardless

⁶ Choose "He started it" for **Trish** or "I started it" for **Holmes**

⁷ Choose Bully for **Jules** or for later Malia or Caroline points, choose Defend for **Madison** or for later Chloe or Penny points

⁸ Point for **Emma**. Although you can sacrifice Emma's point to start **Chloe's** route

⁹ Choose Watch Video for **Chloe**, Sit Down for **Penny**, Office for **Caroline**, Think About It for **Malia**

¹⁰ A point for **Emma**, but can be sacrificed for a necessary **Madison** scene here

¹¹ Point for **Jules** (necessary here) or **Holmes**

Day 6	Day 7	Day 8	Day 9	Day 10
Help her/Answer ¹	[3 possible] ⁵	Trail Emma ⁸	Holmes*	Madison/Holmes
Restaurant	Caroline/Library ⁶	Penny/Caroline	Go with Emma ⁹	Trish*
Watch/Say hello ³	Meet Emma ⁷	Camgirls/Malia	[3 possible] ¹⁰	[5 possible] ¹¹
Go left/Go right ⁴				

¹ Point for **Penny** or **Malia**. Choosing Answer also keeps Chloe's route open if on their's

³ Choose Just Watch for **Jenna**, or Say Hello to secure either Trish or Holmes route

⁴ Choose Go left to secure **Trish's** route, choose Go Right to secure **Holmes** route

⁵ Points for **Jules**, **Malia** or **Caroline** (choose neither). Choose Malia to secure Chloe's route

⁶ A point for **Caroline** or choose Library for a necessary point to secure **Chloe's** route

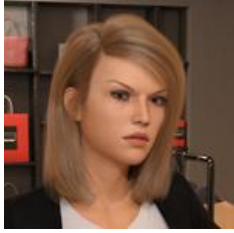
⁷ A point for **Emma** that can be sacrificed to secure **Chloe's** route by continuing to listen

⁸ A necessary scene for **Emma** that can be pushed back later for a **Madison** or **Trish** point here

⁹ A scene for **Emma** that opens up sub-routes. Make multiple saves here. Otherwise, it's her previous necessary scene or a point for **Trish** or **Caroline**

¹⁰ Point for **Jules**, **Madison** or **Chloe**, depending on if their routes are still open

¹¹ Point for **Malia**, **Penny**, **Caroline**, **Holmes**, or **Madison** (if haven't visited side streets yet), if still open



HOLMES

Day 1	Day 2	Day 3	Day 4	Day 5
Ignore Zoey	Text back/Ignore ¹	Sure/Sorry ⁴	Defend/Bully ⁶	[4 possible] ⁹
Punch Caleb	Study history ²	I started it	[3 possible] ⁷	Eavesdrop/Leave ¹⁰
Do what I want	Library/Go home ³	Pizza/Macarons ⁵	[4 possible] ⁸	Give information

¹ Point for **Emma** or **Malia**. Starts either of their routes

² Point for **Madison**. Trish's route is not viable on Holmes's

³ Point for **Rachel**. Sarah's route isn't viable on Holmes's

⁴ Point for **Penny** or **Zoey**. Both routes are activate at end of Week 1 regardless

⁵ Point for **Emma** or **Madison**

⁶ Point for **Madison**. Choose Bully to start Caroline's route the next day or a point for **Malia**

⁷ Choose Dorm for **Rachel**, Science Lab for **Chloe** or **Emma**, neither for **Penny**, **Malia** or **Caroline**

⁸ Choose Blakeman for **Malia** or **Caroline** for her. Choose Order to starts **Chloe's** route or Chaos to continue **Emma's** route. All other choices are non-viable

⁹ Choose Watch Video for **Chloe**, Sit Down for **Penny**, Office for **Caroline**, Think About It for **Malia**

¹⁰ Choose Eavesdrop for **Madison**. Choose Leave Them for **Emma**. Possible to do both by end of week

Day 6	Day 7	Day 8	Day 9	Day 10
Help her/Answer ¹	Malia/Don't meet ³	Trail/Hurry class ⁶	Ask about Florist ⁹	Rachel/Madison
Restaurant ²	[3 possible] ⁴	Penny/Caroline ⁷	Emma/Caroline ¹⁰	[No scene] ¹²
Say hello	[3 possible] ⁵	Camgirls/Malia ⁸	Streets/Chloe ¹¹	Eat with Holmes
Go right				

¹ Point for **Penny** or **Malia**. Choosing Answer also keeps **Rachel** or **Chloe's** route open if on their's

² Point for **Madison**

³ Point for **Malia** or **Caroline**. Choose Malia if going for Rachel or Chloe

⁴ Point for **Caroline**, **Rachel** or **Chloe** (choose library) here

⁵ Point for **Emma**, **Penny** or **Chloe**, depending on previous choice. Chloe's point here is necessary

⁶ Point for **Emma** or **Madison**, depending on if their routes are still open

⁷ Point for **Penny** or **Caroline**, depending on if their routes are still open

⁸ Point for **SluttyDemon** or **Malia**, depending on if their routes are still open

⁹ Necessary scene for **Holmes**, but can be pushed back to earn a point for **Rachel** here

¹⁰ Point for **Emma** or **Caroline**, depending on if their routes are still open

¹¹ Point for **Madison** or **Chloe**, depending on if their routes are still open

¹² None of the other girl's route should be active for this part



ISABELLA

Day 1	Day 2	Day 3	Day 4	Day 5
Give Zoey Pen	Art class/Skip ¹	Sure/Sorry ²	Defend/Bully ⁴	[4 possible] ⁷
Ignore Caleb	Decline	Go home	Science/Don't ⁵	Eavesdrop/Leave ⁸
Don't go to club	Sharks	Pizza/Downtown ³	[3 possible] ⁶	Lie*

¹ Point for **Jules** or **Rachel**

² Point for **Penny** or **Zoey**. Both routes are activate at end of Week 1 regardless

³ Point for **Emma** or **Jules**

⁴ Point for **Madison** or **Jules**. Choose Defend if you want to start Chloe's route or a point for Penny. Choose Bully to start either Malia or Caroline's route

⁵ Choose Science for Trish and to start Chloe or Emma's route. Trish's route is non-viable with Isabella's. Choose Don't Visit to start **Malia's** route

⁶ If you didn't go to the lab, you start **Malia's** route here. Otherwise it's a point for **Chloe** or **Emma**

⁷ Choose Watch Video for **Chloe**, Sit Down for **Penny**, Office for **Caroline**, Think About It for **Malia**

⁸ Choose Eavesdrop for a necessary **Madison** scene or a point for **Emma** otherwise

Day 6	Day 7	Day 8	Day 9	Day 10
Help her/Answer ¹	[3 possible] ³	Hurry/Trail Emma ⁶	[no scene]	Madison*
Restaurant ²	Caroline/Chloe ⁴	Take CPR class ⁷	Emma/Caroline ⁹	Lunch w/ Isabella
Bob's Corner	[3 possible] ⁵	Camgirls/Malia ⁸	[3 possible] ¹⁰	[4 possible] ¹¹

¹ Point for **Penny** or **Malia**. Choose Malia if you want to keep Chloe's route open. Choose Help Her if you want to keep Caroline's route open

² Choose Restaurant for a **Madison** point. Sarah is non-viable on this route

³ Point for **Jules** which leads into Jenna (non-viable), or a point for **Malia** (leads into required 2 Chloe scenes), or 2 points for **Caroline** (to secure her route if you already met her)

⁴ Point for Jenna or **Caroline** if coming from Jules, another point for **Caroline** if following up her scene, or choose Library for a necessary **Chloe** scene. Caroline *after* Jules will not secure Caroline's route, though

⁵ Point for **Emma** or **Penny**, or a necessary scene to secure **Chloe's** route

⁶ Point for **Emma** or **Madison**, if their routes are still open

⁷ Necessary scene for **Isabella's** route that won't be offered again. Or a point for **Penny** or **Caroline**

⁸ Point for **SluttyDemon** or **Malia**, if their routes are still open

⁹ Point for **Emma** or **Caroline**, if their routes are still open

¹⁰ Point for **Jules**, **Chloe** or **Madison**, if their routes are still open

¹¹ Point for **Malia**, **Penny**, **Caroline**, if their routes are still open. Also **Madison** (didn't visit side streets)



JENNA

Day 1	Day 2	Day 3	Day 4	Day 5
Give Zoey Pen	Attend class ²	Sure/Sorry ⁵	Defend ⁷	[3 possible] ¹⁰
Ignore Caleb	Check out/Decline ³	Tell him	Rachel/Don't ⁸	[Neither matters]
Check out club ¹	[4 possible] ⁴	Katy/Downtown ⁶	[3 possible] ⁹	Go to club/Don't ¹¹
				Lie (req. for Day7)

¹ Point for **Ash**. Starts her route and necessary to later meet Jenna

² Point for **Jules**. Rachel is non-viable on this route

³ Point for **Zoey and Katy** or **Ash**.

⁴ Choose Doom Metal for **Katy** or Take Blame for **Ash**. Chloe is non-viable on this route

⁵ Point for **Penny** or **Zoey**. Both routes are activate at end of Week 1 regardless

⁶ Point for **Katy** or **Jules**

⁷ Point for **Jenna**. Choose Bully if you don't want max pts with Jenna and to start **Jules** route

⁸ Choose Rachel or a point for **Penny**. Rachel leads to Katy and Sarah. Penny leads to Malia. Trish, Chloe and Emma are all essentially non-viable

⁹ Depending on previous choice, 4 options are available here: Zombie movie for **Katy**, Classic movie for **Sarah**, or a point for **Malia** if you saw Penny

¹⁰ Choose Sit Down for **Penny** or Think About It for **Malia**. Chloe and Caroline are both non-viable

¹¹ Choose Ero-games club for **Ash**, or Something Else for **Sarah** if you met her earlier

Day 6	Day 7	Day 8	Day 9	Day 10
Help her/Answer ¹	Visit Jules ⁴	Slowly go to class ⁵	Jenna meet Zoey ⁸	Skip class ⁵
Movies/Sarah ²	Cross street	Ero-games club ⁶	Tuesday club*	Check on Jenna ⁹
Decline ³	Shopping w/Penny	Malia/Katy ⁷	Visit Jules*	Malia/Penny ¹⁰

¹ Point for **Penny** or **Malia**. Choose Malia if you want to keep Chloe's route open

² Choose Movies for **Ash** or a point for **Sarah**. A 3rd point here for either secures their route for Week 2

³ Don't go to Bob's Corner for a **Jenna** point. But, it can be sacrificed to secure **Katy's** route (if available)

⁴ Point for **Jules**, but leads into a necessary scene for Jenna's route

⁵ Point for **Sarah**, if her route is still open

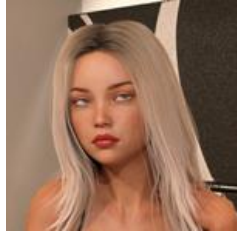
⁶ Necessary scene for **Jenna**, but can be pushed back until later for a **Penny** point

⁷ Point for **Malia**. Also for **Katy** too if you sacrificed Jenna's Day 6 point

⁸ A point for **Jenna** or last chance for her previous necessary scene. Otherwise a point for **Katy** possibly

⁹ A point for **Jenna** or **Ash**, if her route is still open and you're not trying for max Jenna points

¹⁰ Point for **Penny** or Malia if her route is still open



JULES

Day 1	Day 2	Day 3	Day 4	Day 5
Give Zoey Pen ¹	Art class	Sure/Sorry ⁵	Bully ⁷	[4 possible] ¹⁰
Ignore Caleb	[4 possible] ³	[4 possible] ⁶	[3 possible] ⁸	Leave them
Go to club/Don't ²	[7 possible] ⁴	Explore Downtown	[5 possible] ⁹	Lie
				Look/Don't look ¹¹

¹ You can choose to *not* give Zoey the pen here as long as you avoid History Tutoring on Day 2 (Madison)

² Choose to check out the club to begin **Ash's** route or don't to begin **Isabella's**

³ Choose Check Out City for **Zoey and Katy**, Decline for either **Ash** or **Isabella**, Science Tutor for **Trish**

⁴ Choose Doom Metal for **Katy**, Camgirls for **SluttyDemon**, Research for **Trish**, Take the Blame for **Ash**, Act Offended for **Chloe**, Sharks for **Isabella**, Reapers for **Sarah**. First chance to start Chloe sub-route

⁵ Point for **Penny** or **Zoey**. Both routes are activate at end of Week 1 regardless

⁶ Choose Tell Him for **Jenna**, Don't Tell him for **Sarah**, Leave school for **Isabella**, Explore for **Rachel**

⁷ A point for **Jules** that can be sacrificed for **Jenna's** route (Defend) if you're not going for max Jules pts

⁸ Dorm for **Rachel** (later Katy/Sarah), Lab for **Trish** (later Chloe/Emma), Neither for **Penny** (later Malia)

⁹ Choose Zombie for **Katy**, Classic for **Sarah**, Blakeman for **Malia**, Order for **Chloe**, Chaos for **Emma**

¹⁰ Choose Watch Video for **Chloe**, Sit Down for **Penny**, Office for **Caroline**, Think About It for **Malia**

¹¹ The choice to look at the pictures here may affect which Jules ending you get. Make 2 saves here

Day 6	Day 7	Day 8	Day 9	Day 10
Help her/Answer ¹	Visit Jules ⁴	[3 possible] ⁷	[3 possible] ⁷	Rachel/Sarah
Movies/Sarah ²	[4 possible] ⁵	[4 possible] ⁷	[4 possible] ⁷	[4 possible] ⁷
[4 possible] ³	[3 possible] ⁶	[3 possible] ⁷	Visit Jules	[4 possible] ⁷
			Accept ⁸	

¹ Point for **Penny** or **Malia**. Choose Malia if you want to keep the Jules-Chloe sub-route open (you'll regain the lost Jules point later in the game). Choose Help Her if you want to keep Caroline's route open

² Choose Movies for **Ash**, or Stay with **Sarah**. Going to the restaurant is pointless, Madison is non-viable

³ Choose to go to Bob's Corner to secure **Katy** or **Isabella's** route. Choose Say Hello to secure **Trish**. Choose Just Watch for a **Jenna** point

⁴ Point for **Jules** which leads into a required Jenna scene, or a necessary **Malia** point which leads into required 2 Chloe scenes, or 2 back-to-back points for **Caroline**

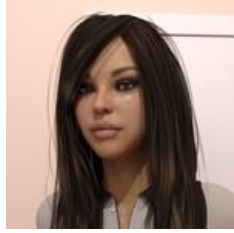
⁵ Cross Street to secure **Jenna's** route, Listen to secure **Chloe**, otherwise points for **Rachel** or **Caroline**

⁶ A point for **Penny**, **Emma** or **Chloe**. Chloe's point here is necessary to secure her route

⁷ Points for several other girls, if their routes are still open

⁸ If on both Jules and Chloe routes here, you can start Jules-Chloe sub-route, but end Chloe's true route

⁹ Points for **Katy**, **Malia** or **SluttyDemon**, if their routes are still open



KATY

Day 1	Day 2	Day 3	Day 4	Day 5
Give Zoey Pen	Skip art class ²	Sure/Sorry ³	Defend/Bully ⁵	[4 possible] ⁷
Ignore Caleb	Check out city	[4 possible] ⁴	Rachel's Dorm	[neither matters]
Go to club/Don't ¹	Doom Metal	Visit Katy	Zombie movie ⁶	Lie*

¹ Choose to check out the club to begin **Ash's** route or don't to begin **Isabella's**

² Skip art class to meet **Rachel**. Rachel's point need to be higher than Trish, Emma's and Chloe by Da

³ Point for **Penny** or **Zoey**. Both routes are activate at end of Week 1 regardless

⁴ Choose Tell Him for **Jenna**, Don't Tell him for **Sarah**, Leave school for **Isabella**, Explore for **Rachel**

⁵ Point for **Jenna** or **Jules**. Choose Defend if you want to start Chloe's route or a point for Penny. Choose Bully to start either Malia or Caroline's route

⁶ Point for **Katy** that can be sacrificed to **Sarah** if not going for max points

⁷ Choose Watch Video for **Chloe**, Sit Down for **Penny**, Office for **Caroline**, Think About It for **Malia**

Day 6	Day 7	Day 8	Day 9	Day 10
Help her/Answer ¹	[3 possible] ⁴	Slowly go to class*	Find Katy ⁹	Rachel/Sarah
Movies/Sarah ²	[4 possible] ⁵	[3 possible] ⁷	Ash/Caroline	Jenna/Ash
Bob's Corner ³	Penny/Chloe ⁶	Visit Katy at work ⁸	Jules/Chloe	[3 possible] ¹⁰

¹ Point for **Penny** or **Malia**. Choose Malia if you want to keep Chloe's route open. Choose Help Her if you want to keep Caroline's route open

² Choose Movies for **Ash**, or Stay with **Sarah**. Going to the restaurant is pointless, Madison is non-viable

³ A required scene to secure Katy's route

⁴ Point for **Jules** which leads into a required Jenna scene, or a necessary **Malia** point which leads into required 2 Chloe scenes, or 2 back-to-back points for **Caroline**

⁵ Choose Walk Across Street to secure **Jenna's** route, Choose to listen to **Chloe** to secure her route, otherwise points for **Rachel** or **Caroline**

⁶ A point for **Penny** or **Chloe**. Chloe's point here is necessary to secure her route

⁷ Points for **Jenna**, **Penny** or **Caroline**, if their routes are still open

⁸ A point for Katy that can be sacrificed for **SluttyDemon** or **Malia**

⁹ A point for Katy that can be sacrificed for **Rachel** or **Jenna**

¹⁰ Points for **Malia**, **Penny** or **Caroline**, if their routes are still open



MADISON

Day 1	Day 2	Day 3	Day 4	Day 5
Ignore Zoey	[4 possible] ³	Sure/Sorry ⁵	Defend ⁶	[4 possible] ⁹
Ignore/Punch ¹	Study History	[6 possible] ¹	[3 possible] ⁷	Eavesdrop
[4 possible] ²	Library/Go home ⁴	Macarons	[6 possible] ⁸	Lie/Give info ¹⁰

¹ Choose any route here. Decisions here will not affect Madison route, so follow the other girls route guide

² Choose Check Out Club for **Ash**, Decline for **Isabella**, Apologize for **Caroline**, Backtalk for **Holmes**

³ Choose Art Class for **Jules**, Skip class for **Rachel**, Text back for **Emma** or Ignore text for **Malia**

⁴ Choose Library for **Rachel** or not for **Sarah**

⁵ Point for **Penny** or **Zoey**. Both routes are activate at end of Week 1 regardless

⁶ A point for **Madison**, but can be sacrificed to give to Jules (which leads into a point for Malia/Caroline)

⁷ Choose Dorm for **Rachel** (later Katy/Sarah), Lab for **Trish** (later Chloe/Emma), Neither for **Penny** (later Malia/Caroline)

⁸ Choose Zombie for **Katy**, Classic for **Sarah**, Blakeman for **Malia**, Assistant Dean for **Caroline**, Order for **Chloe**, Chaos for **Emma**

⁹ Choose Watch Video for **Chloe**, Sit Down for **Penny**, Office for **Caroline**, Think About It for **Malia**

¹⁰ Choose Lie for a necessary **Jules** point or a point for **Holmes** otherwise

Day 6	Day 7	Day 8	Day 9	Day 10
Help Her/Answer ¹	[3 possible] ⁴	Hurry to Class ⁷	[4 possible] ³	[4 possible] ³
Restaurant ²	[4 possible] ⁵	[4 possible] ³	[4 possible] ³	[4 possible] ³
[5 possible] ³	[3 possible] ⁶	[3 possible] ³	Side streets ⁸	[4 possible] ⁹

¹ Point for **Penny** or **Malia**. Choose Malia if you want to keep Chloe's route open. Choose Help Her if you want to keep Caroline's route open

² Choose Restaurant for a **Madison** point. Otherwise, choose Movies for **Ash** or a point for **Sarah**

³ Choose any route here. Decisions here will not affect Madison route, so follow the other girls route guide

⁴ Point for **Jules** which leads into a required Jenna scene, or a necessary **Malia** point which leads into required 2 Chloe scenes, or 2 back-to-back points for **Caroline**

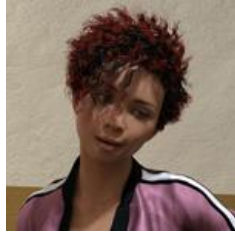
⁵ Choose Walk Across Street to secure **Jenna's** route, Choose to listen to **Chloe** to secure her route, otherwise points for **Rachel** or **Caroline**

⁶ A point for **Penny**, **Emma** or **Chloe**. Chloe's point here is necessary to secure her route

⁷ A point for **Madison**, but can be sacrificed for a point towards any other girl at this choice

⁸ A necessary point for **Madison**, but it can be pushed back one day if you want to continue **Jules** or **Chloe** here instead

⁹ Last chance to visit the downtown side streets and continue Madison's route if you skipped it



MALIA

Day 1	Day 2	Day 3	Day 4	Day 5
Ignore Zoey	Ignore Text	Sure/Sorry ⁴	Bully ⁷	Think about it
Punch Caleb	History/Science ²	He started it/I did ⁵	Don't visit ⁸	Eavesdrop/Leave ⁹
Do what I want ¹	[4 possible] ³	Pizza/Macarons ⁶	Dean Blakeman	Lie/Give info ¹⁰

¹ Choose "Do what I want" for **Holmes** point. Caroline's route requires sacrificing 2 Malia points to secure

² Choose History for **Madison** or Science for **Trish**.

³ Choose Research for **Trish**, Camgirls for **SluttyDemon**. Both Rachel and Sarah are non-viable here

⁴ Point for **Penny** or **Zoey**. Both routes are activate at end of Week 1 regardless

⁵ Choose "He started it" for **Trish** or "I started it" for **Holmes**

⁶ Choose Pizza for **Emma** or Macarons for **Madison**

⁷ Point for **Jules**. Also leads into a Malia point on Day 5

⁸ Point for **Penny**. Also leads into a Malia point after

⁹ Choose Eavesdrop for a necessary **Madison** scene or a point for **Emma** otherwise

¹⁰ Point for **Jules** or **Holmes**

Day 6	Day 7	Day 8	Day 9	Day 10
Answer her call	Meet up with Malia	[3 possible] ⁵	Ask about Florist ⁷	Madison/Holmes ¹⁰
Restaurant ¹	Rachel/Library ³	Penny*	Emma/Trish ⁸	Trish*
Just watch/Hello ²	Emma/Penny ⁴	Fast food w/ Malia ⁶	Jules/Side streets ⁹	Spy lessons

¹ Choose Restaurant for a **Madison** point. Sarah is non-viable on this route

² Choose Say Hello to secure **Trish** or **Holmes** route. Jenna's route is non-viable, but Just Watch for fun

³ Both Rachel and Chloe are non-viable on Malia's route so this choice doesn't matter

⁴ Point for **Emma** or **Penny**

⁵ Point for **Emma**, **Trish** or **Madison**, if their routes are still open

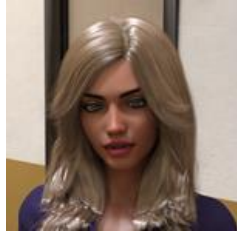
⁶ Necessary scene for **Malia's** route that can be pushed back. Or a point for **SluttyDemon**

⁷ Point for **Holmes**, if her route is still open

⁸ Point for **Emma** or **Trish**, if their routes are still open

⁹ Point for **Jules** or **Madison**, if their routes are still open

¹⁰ Point for **Holmes**, or **Madison** (if you visited side streets)



PENNY

Day 1	Day 2	Day 3	Day 4	Day 5
Ignore Zoey ¹	[4 possible] ²	Sure, no problem ³	Defend ⁴	Sit down ⁷
Ignore/Punch ²	[5 possible] ²	[6 possible] ²	Don't visit ⁵	Eavesdrop/Leave ⁸
[4 possible] ²	[8 possible] ²	[4 possible] ²	Blakeman/Caroline ⁶	Lie/Give info ⁹

¹ Penny's route will always be open at the end of Week 1 (Day 7). However, Penny will need about 7/10 points by the end of Week 2. This guide assumes a maximum points route for her.

² Choose any route here. Decisions here will not affect Penny's route, so follow the other girl's route guide

³ A point for **Penny**. One of three points that can be sacrificed to give a point for **Zoey**

⁴ Point for either **Jenna** or **Madison** when choosing Defend. Doing so leads to a Penny point on Day 5

⁵ A point for **Penny**. One of three points that can be sacrificed to give a point for **Rachel** or **Trish** here

⁶ A point for **Malia** or **Caroline** if you met Penny earlier. Otherwise a point for **Katy**, **Sarah**, **Chloe** or **Emma** if you didn't take Penny's earlier scene

⁷ A point for **Penny**. One of three points that can be sacrificed for **Chloe**, **Malia** or **Caroline**

⁸ Choose Eavesdrop for a necessary **Madison** scene or a point for **Emma** otherwise

⁹ Choose Lie for a necessary **Jules** point or a point for **Holmes** otherwise

Day 6	Day 7	Day 8	Day 9	Day 10
Help her ¹	[3 possible] ⁴	[4 possible] ²	[4 possible] ²	[4 possible] ²
[3 possible] ²	[4 possible] ⁵	Talk with Penny ⁷	[4 possible] ²	[4 possible] ²
[5 possible] ³	Shop with Penny ⁶	[3 possible] ²	[3 possible] ²	Date with Penny ⁷

¹ A point for **Penny**. One of three points that can be sacrificed for **Malia**. Choose Malia if you want to keep Chloe's route open.

² Choose any route here. Decisions here will not affect Penny's route, so follow the other girl's route guide

³ Choose to go to Bob's Corner to secure **Katy** or **Isabella's** route. Choose Say Hello to secure **Trish** or **Holmes** route.

⁴ Point for **Jules** which leads into a required Jenna scene, or a necessary **Malia** point which leads into required 2 Chloe scenes, or 2 back-to-back points for **Caroline**

⁵ Choose Walk Across Street to secure **Jenna's** route, Choose to listen to **Chloe** to secure her route, otherwise points for **Rachel** or **Caroline**

⁶ A point for **Penny**. One of three points that can be sacrificed for **Emma** or **Chloe**. Chloe's point here is necessary to secure her route

⁷ A point for **Penny**. One of three points that can be sacrificed for any of the other open routes



RACHEL

Day 1	Day 2	Day 3	Day 4	Day 5
Ignore Zoey	Skip art class	Sure/Sorry ²	Defend/Bully ⁴	[4 possible] ⁶
Ignore Caleb	Study history ¹	Explore college	Visit Rachel dorm	Eavesdrop ⁷
Don't go to club	Go to library	Pizza/Macarons ³	Zombie/Classic ⁵	Lie ⁸

¹ Point for **Madison**. Starts her routes

² Point for **Penny** or **Zoey**. Both routes are activate at end of Week 1 regardless

³ Choose Pizza for **Emma** or Macarons for **Madison**.

⁴ Point for **Madison** or **Jules**. Choose Bully to start Caroline or Malia's route the next day

⁵ Both Katy and Sarah are non-viable on Rachel's route

⁶ Choose Watch Video for **Chloe**, Sit Down for **Penny**, Office for **Caroline**, Think About It for **Malia**. It's possible to start any of these routes here if you want to sacrifice Rachel's 5th point on Day 7

⁷ Point for **Madison**. Emma's route is non-viable and this is a necessary scene for Madison's route

⁸ Point for **Jules**. Holmes is non-viable here. Jules is also only viable on this route if you bullied Madison earlier and if you sacrifice Rachel's 5th point on Day 7

Day 6	Day 7	Day 8	Day 9	Day 10
Help her/Answer ¹	[3 possible] ³	Hurry to class ⁶	Talk with Rachel	Rachel's Dorm ¹¹
Restaurant ²	Rachel's Dorm ⁴	Penny/Caroline ⁷	Caroline ⁹	[No scene] ¹²
See Jenna in alley	Penny/Listen ⁵	Camgirls/Malia ⁸	[3 possible] ¹⁰	[3 possible] ¹³

¹ Point for **Penny** or **Malia**.

² Point for **Madison**. It's way too late to start Sarah's route here

³ Point for **Jules**, **Malia** or **Caroline**. Choose Malia if going for max Rachel points or met Chloe earlier. Jules and Malia can also be secured if you bullied Madison earlier

⁴ Point for **Rachel**. Points for **Chloe**, **Caroline** or **Jules** if on their routes instead of maxing out Rachel

⁵ Point for **Penny** or **Chloe**, depending on previous choices. Chloe's point here is necessary

⁶ Point for **Madison**. She's the only viable route here

⁷ Point for **Penny** or **Caroline**. Penny's will be the default, but Caroline needs 3 earlier points to be open

⁸ Point for **SluttyDemon** or **Malia**, depending on if their routes are still open

⁹ Point for **Caroline**, if her route is still open

¹⁰ Point for **Jules**, **Madison** or **Chloe**, depending on if their routes are still open

¹¹ Necessary point for **Rachel**. It can be pushed back 'til later if you want a point for **Madison** here

¹² None of the other girl's route should be active for this part

¹³ Point for **Malia**, **Penny** or **Caroline**. **Madison** also has a necessary scene if it hasn't been seen yet



SARAH

Day 1	Day 2	Day 3	Day 4	Day 5
Ignore Zoey	Skip art class	Sure/Sorry ¹	Bully/Defend ³	[4 possible] ⁴
Ignore Caleb	Study history	Don't tell him	Visit dormitories	Eavesdrop ⁵
Check out club	Go home	Macarons ²	Classic Movie	Do something else
				Lie/Give info ⁶

¹ Choose Sure for **Penny**, Sorry for **Zoey**. Both routes are activate at end of Week 1 regardless

² Point for **Madison**. Try to avoid Emma before Day 4 in order to get Sarah's Day 4 scene

³ Point for **Madison** or **Jules**. This choice determines which other character's route are open. Choose Defend to start Chloe's or advance Penny's on Day 5. Choose Bully to start Caroline or Malia's on Day 5. Both Madison and Jules are also viable routes with Sarah's as well

⁴ Choose Watch Video for **Chloe**, Sit Down for **Penny**, Office for **Caroline**, Think About It for **Malia**

⁵ Point for **Madison**. Emma's route is non-viable with Sarah's max points route

⁶ Point for **Jules**. Lying also keeps Jenna's route open later for Day 7. Only choose Give info if going for Caroline or Malia

Day 6	Day 7	Day 8	Day 9	Day 10
Help her/Answer ¹	[3 possible] ²	Slowly go to class ⁵	Jenna/Rachel ⁸	Skip class/Slowly
Stay with Sarah	[4 possible] ³	[3 possible] ⁶	Caroline ⁹	Jenna ¹¹
See Jenna in alley	Penny/Listening ⁴	Camgirls/Malia ⁷	[3 possible] ¹⁰	[4 possible] ¹²

¹ Point for **Penny** or **Malia**. Choosing Answer also keeps Rachel or Chloe's route open if on their's

² Point for **Jules**, **Caroline** or **Malia**. Choose neither Jules or Malia to keep Caroline's route open. Choose Malia if going down Rachel or Chloe route as well

³ Points for **Jenna**, **Caroline**, **Rachel** or **Chloe**. All four have viable routes alongside Sarah's

⁴ Point for **Penny** or **Chloe** depending on previous choices. Emma isn't viable at this point

⁵ Necessary scene here for **Sarah**. Alternatively, it can be pushed back to Day 10 if you want **Madison's** point here

⁶ Point for **Jenna**, **Penny** or **Caroline**, depending on if their routes are still open

⁷ Point for **Malia** or **SluttyDemon**, depending on if their routes are still open

⁸ Point for **Jenna** or **Rachel**, depending on if their routes are still open

⁹ Point for **Caroline**. She should be the only viable choice for Sarah's route here

¹⁰ Point for **Jules**, **Madison** or **Chloe**, depending on if their routes are still open

¹¹ Point for **Jenna**. She should be the only viable choice for Sarah's route here

¹² Point for **Malia**, **Penny**, **Caroline** or **Madison**, depending on previous choices



TRISH

Day 1	Day 2	Day 3	Day 4	Day 5
Ignore Zoey	Text back/Ignore ²	Sure/Sorry ³	Defend/Bully ⁵	[4 possible] ⁷
Punch Caleb	Study science	He started it	Visit Trish	Eavesdrop/Leave ⁸
Apologize ¹	Research	Pizza/Explore ⁴	Order/Chaos ⁶	Lie ⁹

¹ Point for **Caroline**. Starts her route

² Point for **Emma** or **Malia**.

³ Point for **Penny** or **Zoey**. Both routes are activate at end of Week 1 regardless

⁴ Choose Pizza for **Emma** or Explore Downtown for **Jules**

⁵ Point for **Madison** or **Jules**. Choose Bully to keep Malia's route open later

⁶ Choose Order to start **Chloe's** route or Chaos for another **Emma** point

⁷ Choose Watch Video for **Chloe**, Sit Down for **Penny**, Office for **Caroline**, Think About It for **Malia**

⁸ Choose Eavesdrop for a necessary **Madison** scene or Leave Them for another **Emma** point

⁹ Point for **Jules**. Holmes is non-viable with Trish's route

Day 6	Day 7	Day 8	Day 9	Day 10
Help her/Answer ¹	[3 possible] ³	Coffee w/ Trish ⁷	[No scene]	Madison ¹²
Restaurant ²	Caroline/Library ⁴	Penny/Caroline ⁸	Look for Trish ¹⁰	Visit Trish
Say hello	[3 possible] ⁶	Camgirls/Malia ⁹	[3 possible] ¹¹	[3 possible] ¹³
Go left				

¹ Point for **Penny** or **Malia** (who is non-viable). Choose Malia if you want to keep Chloe's route open

² Point for **Madison**. It's way too late to start Sarah's route here

³ Point for **Jules**, **Malia** or **Caroline**. Choose Malia to keep Chloe's route open. Jules will be open here if you bullied earlier and lied to Holmes. Caroline can also earn her required 3+ pts by ignoring Jules, Malia

⁴ Point for **Caroline** or **Chloe**. If you chose Malia earlier, choose Library for Chloe

⁵ Point for **Emma**, **Penny**, or **Chloe**, depending on previous choices. Chloe's point here is necessary

⁶ Point for **Madison**. She's the only viable route here

⁷ Non-necessary **Trish** scene, also a non-necessary scene for **Madison** or necessary scene for **Emma**

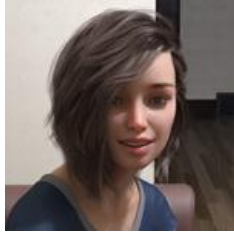
⁸ Point for **Penny** or **Caroline**, if their routes are still open

⁹ Point for **SluttyDemon** or **Malia**, if their routes are still open

¹⁰ Necessary scene for **Trish** that can be pushed back for necessary **Caroline** or **Emma** scenes

¹¹ Point for **Jules**, **Madison** or **Chloe**, depending on if their routes are still open

¹² Point for **Madison**, if explored downtown side-streets



ZOEY

Day 1	Day 2	Day 3	Day 4	Day 5
Give Zoey Pen ¹	[4 possible] ²	Sorry, professor ³	Defend/Bully ⁴	[4 possible] ⁸
Ignore/Punch ²	Check out city ³	[6 possible] ²	[3 possible] ⁵	Eavesdrop/Leave ⁹
[4 possible] ²	[8 possible] ²	[4 possible] ²	[6 possible] ⁶	Lie/Give info ⁹
			Home Visit ⁷	

¹ Zoey's route will always be open at the end of Week 1 (Day 7). However, Zoey will need about 7/10 points by the end of Week 2 to continue her route after. You can ignore her on Day 1, but you lose that point and another on Day 2, meaning you can only lose 1 more point and still remain on her route. This guide assumes a maximum points route for Zoey.

² Choose any route here. Decisions here will not affect Zoey's route, so follow the other girl's route guide

³ A point for **Zoey**. One of three points that can be sacrificed to give a point for **Penny**

⁴ Point for **Madison**, **Jenna** or **Jules**. Choose Defend if you want to start Chloe's route or a point for Penny. Choose Bully to start either Malia or Caroline's route

⁵ Choose Dorm for **Rachel** (later Katy/Sarah), Lab for **Trish** (later Chloe/Emma), Neither for **Penny** (later Malia)

⁶ Choose Zombie for **Katy**, Classic for **Sarah**, Blakeman for **Malia**, Assistant Dean for **Caroline**, Order for **Chloe**, Chaos for **Emma**

⁷ An automatic scene worth a point for **Zoey**

⁸ Choose Watch Video for **Chloe**, Sit Down for **Penny**, Office for **Caroline**, Think About It for **Malia**

⁹ Choose Eavesdrop for a necessary **Madison** scene or a point for **Emma** otherwise

¹⁰ Choose Lie for a necessary **Jules** point or a point for **Holmes** otherwise

Day 6	Day 7	Day 8	Day 9	Day 10
Help her/Answer ¹	[3 possible] ⁴	Morning After ⁷	[4 possible] ²	[4 possible] ²
[3 possible] ²	[4 possible] ⁵	[4 possible] ²	[4 possible] ²	[4 possible] ²
[5 possible] ³	[3 possible] ⁶	[4 possible] ²	[3 possible] ⁵	[5 possible] ²
	Date with Zoey ⁷	[3 possible] ²	Stranger Attack ⁷	

¹ Point for **Penny** or **Malia**. Choose Malia if you want to keep Chloe's route open. Choose Help Her if you want to keep Caroline's route open

² Choose any route here. Decisions here will not affect Zoey's route, so follow the other girl's route guide

³ Choose Bob's Corner to secure **Katy** or **Isabella's** route. Choose Say Hello to secure **Trish** or **Holmes**

⁴ Point for **Jules** which leads into a required Jenna scene, or a necessary **Malia** point which leads into required 2 Chloe scenes, or 2 back-to-back points for **Caroline**

⁵ Cross the street to secure **Jenna's** route, Choose Listen to secure **Chloe**, points for **Rachel** or **Caroline**

⁶ A point for **Penny**, **Emma** or **Chloe** Chloe's point here is necessary to secure her route

⁷ An automatic scene worth a point for **Zoey**

